

# FREE WELL WATER TESTING

PRIVATE WELL WATER QUALITY TESTING

Santa Fe County, NMED and NMDOH will be offering up to 500 free water tests for residents in the **Pojoaque Basin** in Santa Fe County with **private wells** serving homes **not connected to a public water utility**. There will be two types of tests: *lab testing and in-field testing*.

## WHEN

Friday, July 7, 2017, 12:00 p.m.-5:00 p.m.  
Saturday, July 8, 2017, 9:00 a.m.-2:00 p.m.

## Where

Pojoaque Valley High School Gymnasium (South side of the gym)  
1574 NM-502, Pojoaque NM 87506

## WATER TESTS

1. The **lab test** will be done for 300 wells within the **service area\*** of the PBRWS and includes Iron, Nitrate, Arsenic, Manganese, Fluoride, Uranium, Electrical Conductivity and pH.
2. The **in-field test** will be done onsite at the gymnasium for 200 wells **not** within the **service area\*** of the PBRWS and includes Sulfate, Nitrate, Arsenic, Fluoride, Iron, Electrical Conductivity, and pH with the option for the above lab testing for a charge of \$91.38 (Check only. No cash accepted).

## HOW TO COLLECT WATER SAMPLE

- Fill a clean glass or plastic container, without any strong odors, with at least a quart or liter of your well water.
- Collect the water before it runs through any water treatment/filters such as reverse osmosis, a carbon filter, or a water softener. If the home has a whole house filtration system, collect the water at the well head.
- Let the water run 2-3 minutes before collecting the sample.
- Fill the container with the water as close to the time of testing as possible.

We ask that you bring the following **voluntary** information: well coordinates, OSE permit number, well depth, depth to water, well casing material (i.e., steel or pvc), and distance from well to the nearest septic tank/leachfield system. Well coordinates can be determined using Google Maps.

<http://nmtracking.org/water> (505) 827-1046 (NMED) or (505) 986-2426 (SFCU)

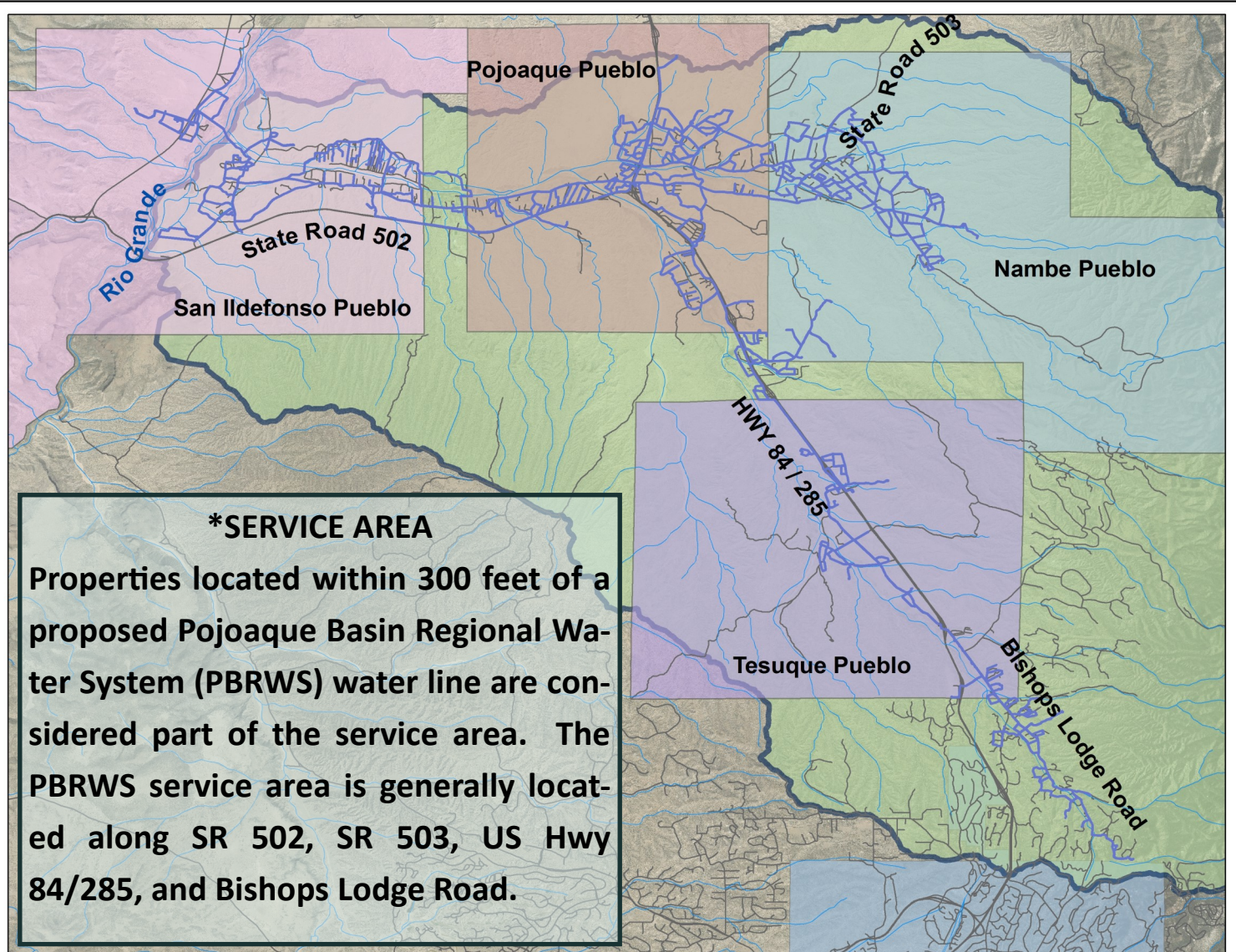
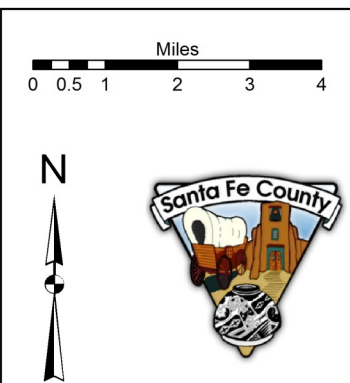
## SPONSORED BY



## POJOAQUE BASIN REGIONAL WATER SYSTEM

### Legend

- Pojoaque Basin
- Proposed Water Lines
- Roads
- City of Santa Fe
- Pueblos**
- POJOAQUE
- TESUQUE
- NAMBE
- SAN ILDEFONSO



**\*SERVICE AREA**  
Properties located within 300 feet of a proposed Pojoaque Basin Regional Water System (PBRWS) water line are considered part of the service area. The PBRWS service area is generally located along SR 502, SR 503, US Hwy 84/285, and Bishops Lodge Road.